

DOORS GLAZED WITH LAMINATED GLASS RATED FOR LARGE MISSILE IMPACT AND REQUIRE NO SHUTTERS.

SERIES-6001 ALUMINUM SLIDING GLASS DOOR

DESIGN LOAD RATING FOR DOORS TO BE AS PER CHART SHOWN ON SHEET 2.

THIS PRODUCT HAS BEEN DESIGNED AND TESTED TO COMPLY WITH THE REQUIREMENTS OF THE FLORIDA BUILDING CODE 2004 EDITION INCLUDING HIGH VELOCITY HURRICANE ZONE (HVHZ).

WOOD BUCKS BY OTHERS, MUST BE ANCHORED PROPERLY TO TRANSFER LOADS TO THE STRUCTURE.

ANCHORS SHALL BE AS LISTED, SPACED AS SHOWN ON DETAILS, ANCHORS EMBEDMENT TO BASE MATERIAL SHALL BE BEYOND WALL DRESSING OR STUCCO.

ANCHORING OR LOADING CONDITIONS NOT SHOWN IN THESE DETAILS ARE NOT PART OF THIS APPROVAL.

A LOAD DURATION INCREASE IN ALLOWABLE STRESS IS USED IN DESIGN OF ANCHORS INTO WOOD ONLY.

MATERIALS INCLUDING BUT NOT LIMITED TO STEEL/METAL SCREWS, THAT COME INTO CONTACT WITH OTHER DISSIMILAR MATERIALS SHALL MEET THE REQUIREMENTS OF 2004 FLORIDA BLDG. CODE SECTION 2003.8.4.

TYPICAL ELEVATION
TESTED UNIT

LAMINATED GLASS
LARGE MISSILE IMPACT

UNANCHORED JAMBS COMPLY WITH DEFLECTION OF L/180 AND ALLOWABLE STRESS LIMITATION

Engr: DR. HUMAYOUN FAROOQ
STRUCTURES
FLA. PE # 16557
C.A.N. 3538

af c
AL-FAROOQ CORPORATION
ENGINEERS & PRODUCT DEVELOPMENT
1235 S.W. 87 AVE
MIAMI, FLORIDA 33174
TEL. (305) 264-8100 FAX. (305) 262-6978
COMP -ANL\W07-84NR

SERIES-6001 ALUM SLIDING GLASS DOOR (L.M.I.)
NR ARCHITECTURAL PRODUCTS
4348 WESTROADS DRIVE
WEST PALM BEACH, FL. 33407
TEL. (561) 844-1121 FAX. (561) 844-6131

no	date	description

date: 10-18-07
scale: 1/2"=1'-0"
dr. by: HAMID
chk. by:

drawing no.
W07-84

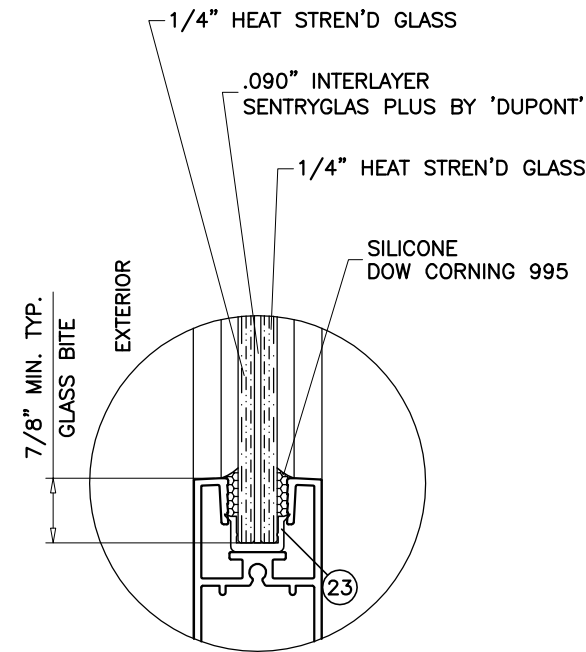
sheet 1 of 7

DESIGN LOAD CAPACITY - PSF

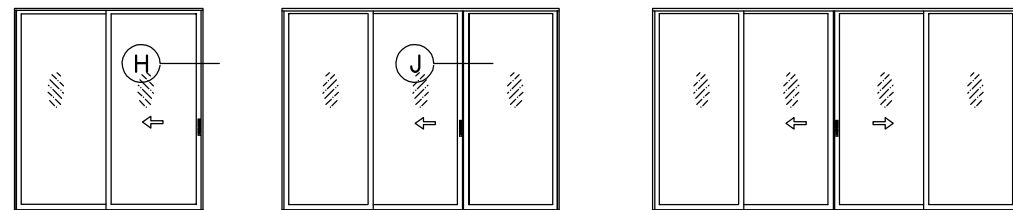
PANEL WIDTH NOMINAL INCHES	DOOR HEIGHT INCHES	ANCHORS TYPE 'A'			ANCHORS TYPE 'B'			ANCHORS TYPE 'C'			
		2 ANCHORS	3 ANCHORS	4 ANCHORS	2 ANCHORS	3 ANCHORS	4 ANCHORS	2 ANCHORS	3 ANCHORS	4 ANCHORS	
		EXT. (+) INT. (-)	EXT. (+) INT. (-)	EXT. (+) INT. (-)	EXT. (+) INT. (-)	EXT. (+) INT. (-)	EXT. (+) INT. (-)	EXT. (+) INT. (-)	EXT. (+) INT. (-)	EXT. (+) INT. (-)	
36	80	100.0	100.0	100.0	100.0	100.0	100.0	100.0	100.0	100.0	
42		97.4	100.0	100.0	100.0	100.0	100.0	100.0	100.0	100.0	
48		89.8	100.0	100.0	100.0	100.0	100.0	100.0	100.0	100.0	
54		84.3	100.0	100.0	100.0	100.0	100.0	100.0	100.0	100.0	
60		80.4	100.0	100.0	100.0	100.0	100.0	100.0	100.0	100.0	
36	84	100.0	100.0	100.0	100.0	100.0	100.0	100.0	100.0	100.0	
42		91.2	100.0	100.0	100.0	100.0	100.0	100.0	100.0	100.0	
48		83.8	100.0	100.0	100.0	100.0	100.0	100.0	100.0	100.0	
54		78.4	100.0	100.0	99.8	100.0	100.0	100.0	100.0	100.0	
60		74.5	100.0	100.0	94.8	100.0	100.0	100.0	100.0	100.0	
36	90	93.1	100.0	100.0	100.0	100.0	100.0	100.0	100.0	100.0	
42		83.3	100.0	100.0	100.0	100.0	100.0	100.0	100.0	100.0	
48		76.2	100.0	100.0	97.0	100.0	100.0	100.0	100.0	100.0	
54		70.9	100.0	100.0	90.3	100.0	100.0	100.0	100.0	100.0	
60		67.0	100.0	100.0	85.4	100.0	100.0	100.0	100.0	100.0	
36	96	85.9	100.0	100.0	100.0	100.0	100.0	100.0	100.0	100.0	
42		76.6	100.0	100.0	97.6	100.0	100.0	100.0	100.0	100.0	
48		69.8	100.0	100.0	88.9	100.0	100.0	100.0	100.0	100.0	
54		64.8	97.2	100.0	82.5	100.0	100.0	100.0	100.0	100.0	
60		60.9	91.4	100.0	77.6	100.0	100.0	96.0	100.0	100.0	
36	102	79.8	100.0	100.0	100.0	100.0	100.0	100.0	100.0	100.0	
42		70.9	100.0	100.0	90.3	100.0	100.0	100.0	100.0	100.0	
48		64.5	96.7	100.0	82.1	100.0	100.0	100.0	100.0	100.0	
54		59.6	89.4	100.0	75.9	100.0	100.0	93.9	100.0	100.0	
36		108	74.5	100.0	100.0	94.8	100.0	100.0	100.0	100.0	100.0
42	66.0		99.1	100.0	84.1	100.0	100.0	100.0	100.0	100.0	
48	59.9		89.8	100.0	76.2	100.0	100.0	94.3	100.0	100.0	
36	114		69.8	100.0	100.0	88.9	100.0	100.0	100.0	100.0	100.0
42			61.8	92.7	100.0	78.7	100.0	100.0	97.3	100.0	100.0
48		55.9	83.8	100.0	71.1	100.0	100.0	88.0	100.0	100.0	
36		120	65.7	98.6	100.0	83.7	100.0	100.0	100.0	100.0	100.0
42			58.0	87.1	100.0	73.9	100.0	100.0	91.4	100.0	100.0
48	52.4		78.6	100.0	66.7	100.0	100.0	82.5	100.0	100.0	

NOTE:
GLASS CAPACITIES ON THIS SHEET ARE
BASED ON ASTM E1300-02 (3 SEC. GUSTS)
AND FLORIDA BUILDING COMMISSION
DECLARATORY STATEMENT DCA05-DEC-219

$$\text{PANEL WIDTH NOMINAL} = \frac{\text{DOOR WIDTH}}{\text{NUMBER OF PANELS}}$$



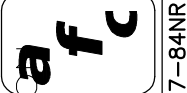
9/16" OVERALL LAMINATED GLASS
GLAZING DETAIL



APPROVED CONFIGURATIONS

TWO TRACK FRAME DOOR CONFIGURATIONS OF MORE THAN FOUR PANELS USING STILE COMBINATIONS SHOWN IN THESE DETAILS MAY ALSO BE APPROVED.

Engr: DR. HUMAYOUN FAROOQ
STRUCTURES
FLA. PE # 16557
C.A.N. 3538



AL-FAROOQ CORPORATION
ENGINEERS & PRODUCT DEVELOPMENT
1235 S.W. 87 AVE
MIAMI, FLORIDA 33174
TEL. (305) 264-8100 FAX. (305) 262-6978

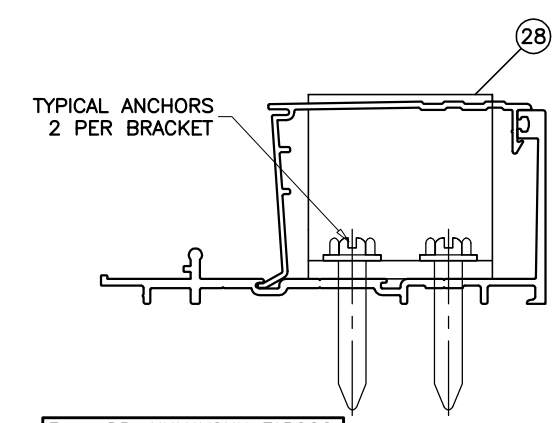
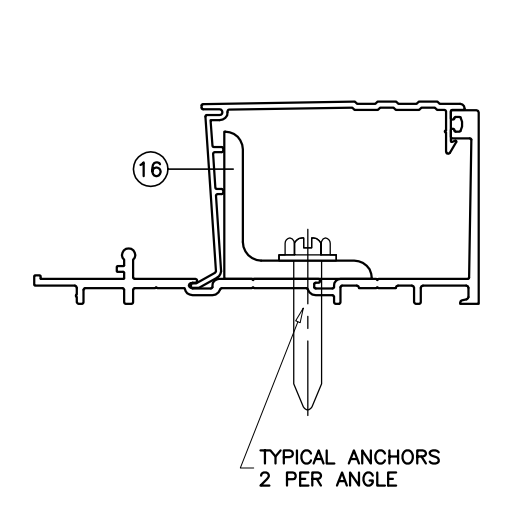
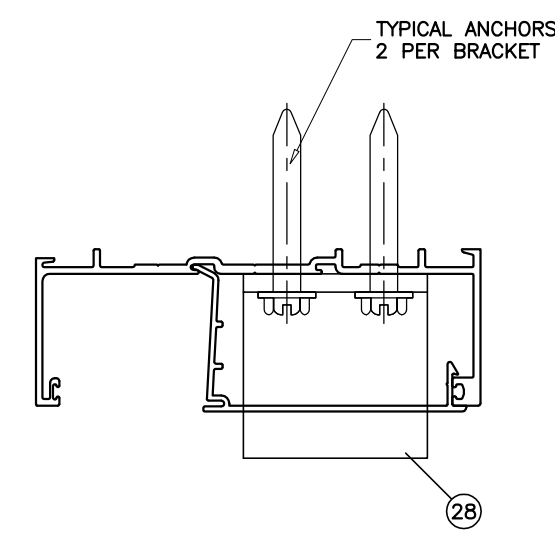
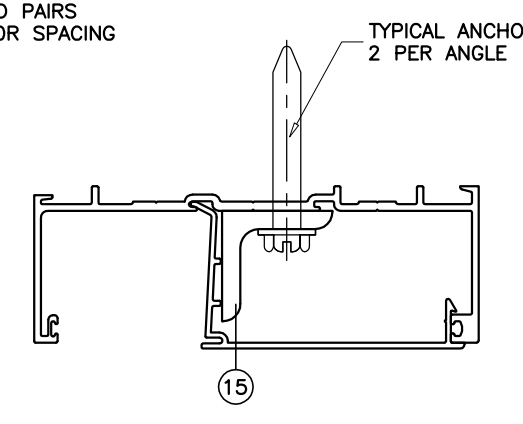
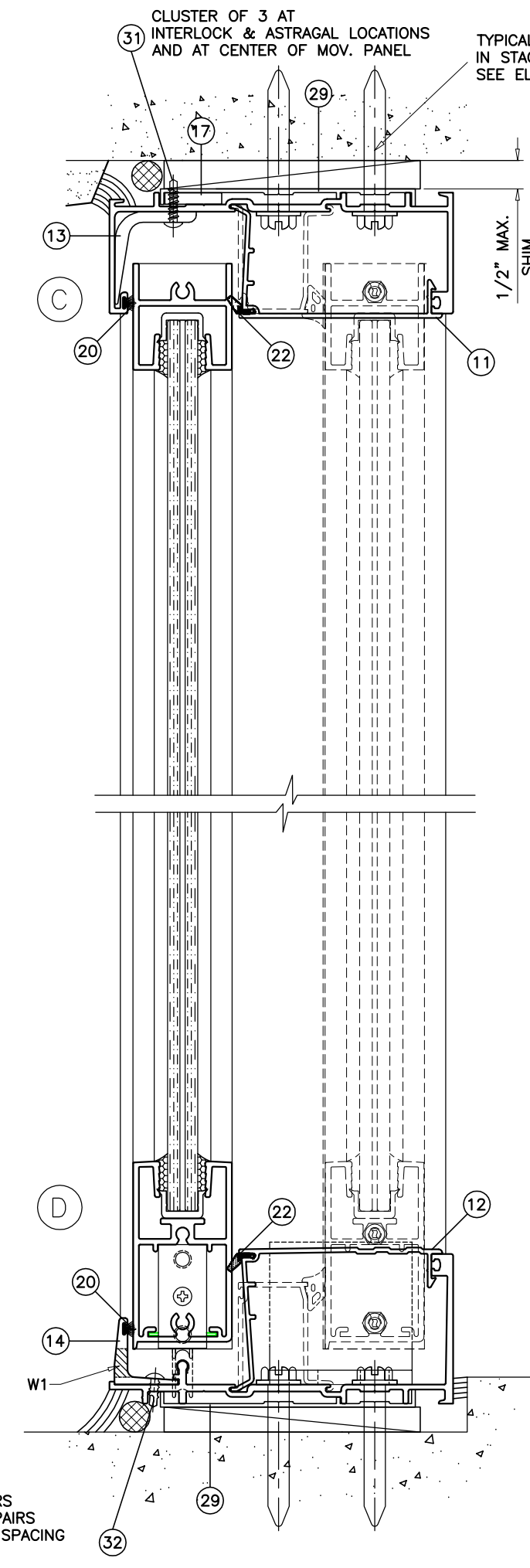
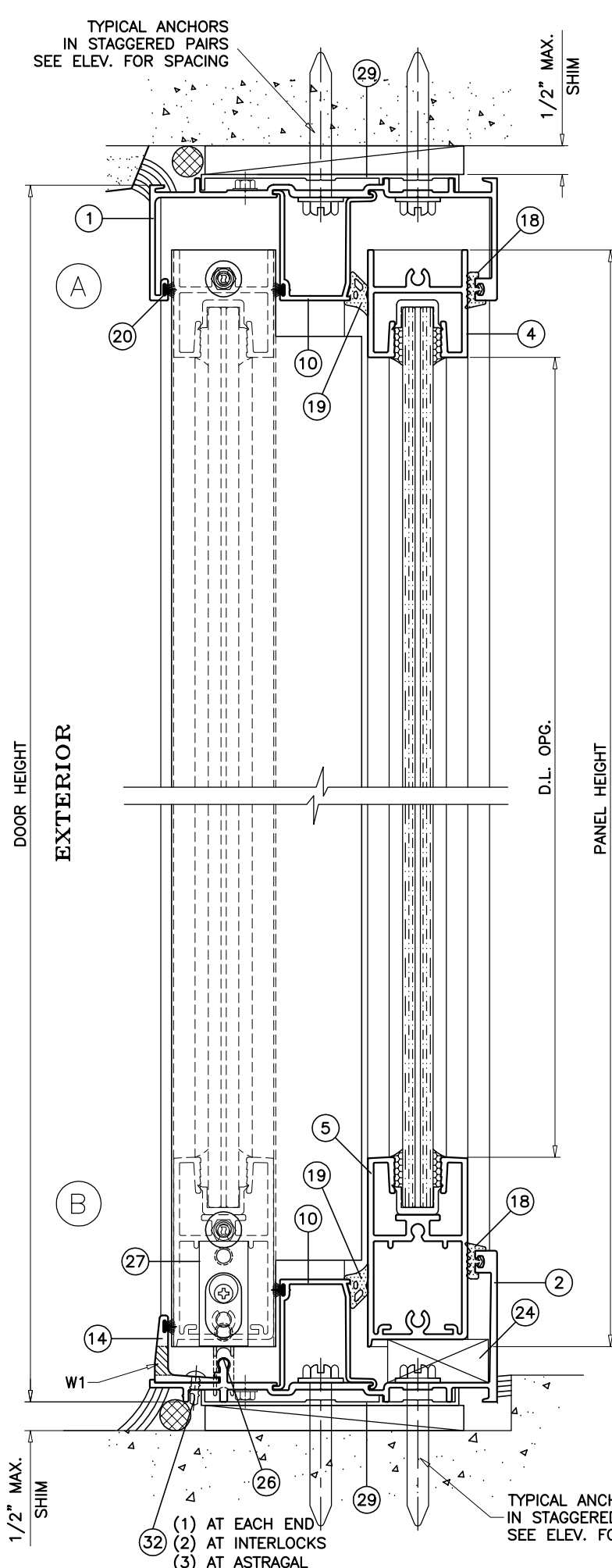
SERIES-6001 ALUM SLIDING GLASS DOOR (L.M.I.)
NR ARCHITECTURAL PRODUCTS
4-348 WESTROADS DRIVE
WEST PALM BEACH, FL. 33407
TEL. (561) 844-1121 FAX. (561) 844-6131

revisions:	no	date	description

date: 10-18-07
scale: 3/8" = 1"
dr. by: HAMID
chk. by:

drawing no.
W07-84
sheet 2 of 7

COMP-ANL\W07-84NR



Engr: DR. HUMAYOUN FAROOQ
STRUCTURES
FLA. PE # 16557
C.A.N. 3538

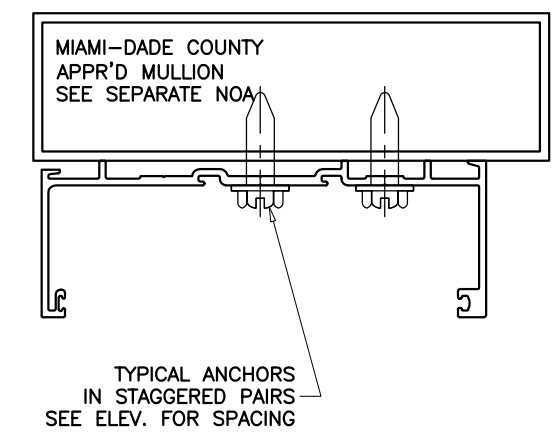
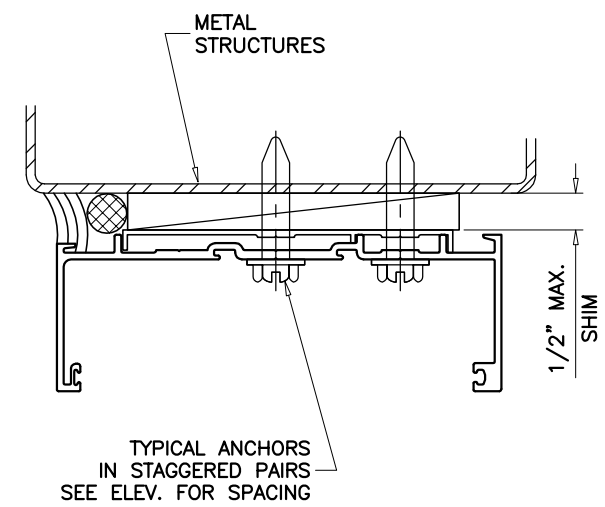
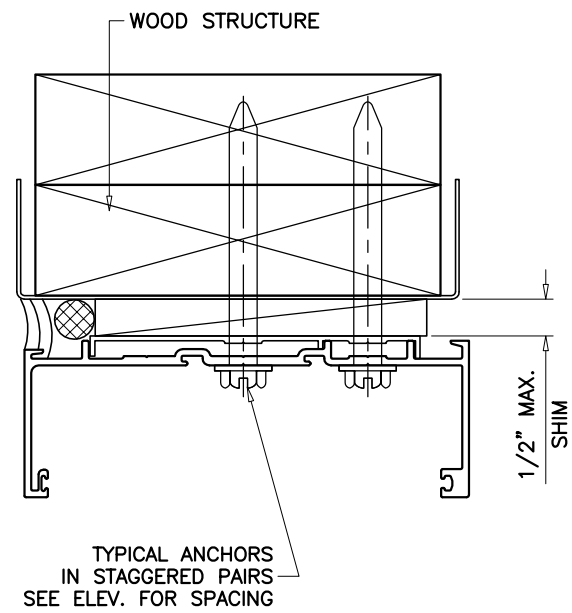
af c
AL-FAROOQ CORPORATION
ENGINEERS & PRODUCT DEVELOPMENT
1235 S.W. 87 AVE
MIAMI, FLORIDA 33174
TEL. (305) 264-8100 FAX. (305) 262-6978
COMP-ANL\W07-84NR

SERIES-6001 ALUM SLIDING GLASS DOOR (L.M.I.)
NR ARCHITECTURAL PRODUCTS
4348 WESTROADS DRIVE
WEST PALM BEACH, FL. 33407
TEL. (561) 844-1121 FAX. (561) 844-6131

revisions:	no	date	description

date: 10-18-07
scale: 3/8" = 1"
dr. by: HAMID
chk. by:

drawing no.
W07-84
sheet 3 of 7



WOOD BUCKS AND METAL STRUCTURES NOT BY N.R. WDW. MUST SUPPORT LOADS IMPOSED BY GLAZING SYSTEM AND TRANSFER THEM TO THE BUILDING STRUCTURE.

TYPICAL ANCHORS: SEE ELEV. FOR SPACING

- TYPE 'A' - 3/8" DIA. LAG SCREWS
INTO WOOD STRUCTURES
WITH 2-1/4" MIN. PENETRATION INTO WOOD
- TYPE 'B' - 3/8" DIA. POWERS WEDGE-BOLT ANCHOR
DIRECTLY INTO CONCRETE (fc' = 3000 PSI MIN.)
WITH 1-1/2" MIN. EMBED INTO CONC.
- TYPE 'C' - 3/8" DIA. SCREWS GRADE 5
INTO METAL STRUCTURES
STEEL : 1/4" THK. MIN. (Fy = 36 KSI MIN.)
ALUMINUM : 1/4" THK. MIN. (6063-T5 MIN.)
(STEEL IN CONTACT WITH ALUMINUM TO BE PLATED OR PAINTED)

ANCHOR EDGE DISTANCES
 INTO CONCRETE AND MASONRY = 2-5/8" MIN.
 INTO WOOD STRUCTURE = 1-1/2" MIN.
 INTO METAL STRUCTURE = 1" MIN.

SEALANTS:
 ALL FRAME CORNERS AND JOINTS SEALED WITH DOW-795 OR TREMCO SPECTREM 2 SILICONE SEALANT.

WEEPHOLES:
 W1 = 1-1/2" X 1/2" WEEP SLOTS
 (1) AT CENTER OF EACH PANEL
 (1) AT EACH SIDE OF INTERLOCK
 (1) AT ASTRAGAL STILE

Engr: DR. HUMAYOUN FAROOQ
 STRUCTURES
 FLA. PE # 16557
 C.A.N. 3538

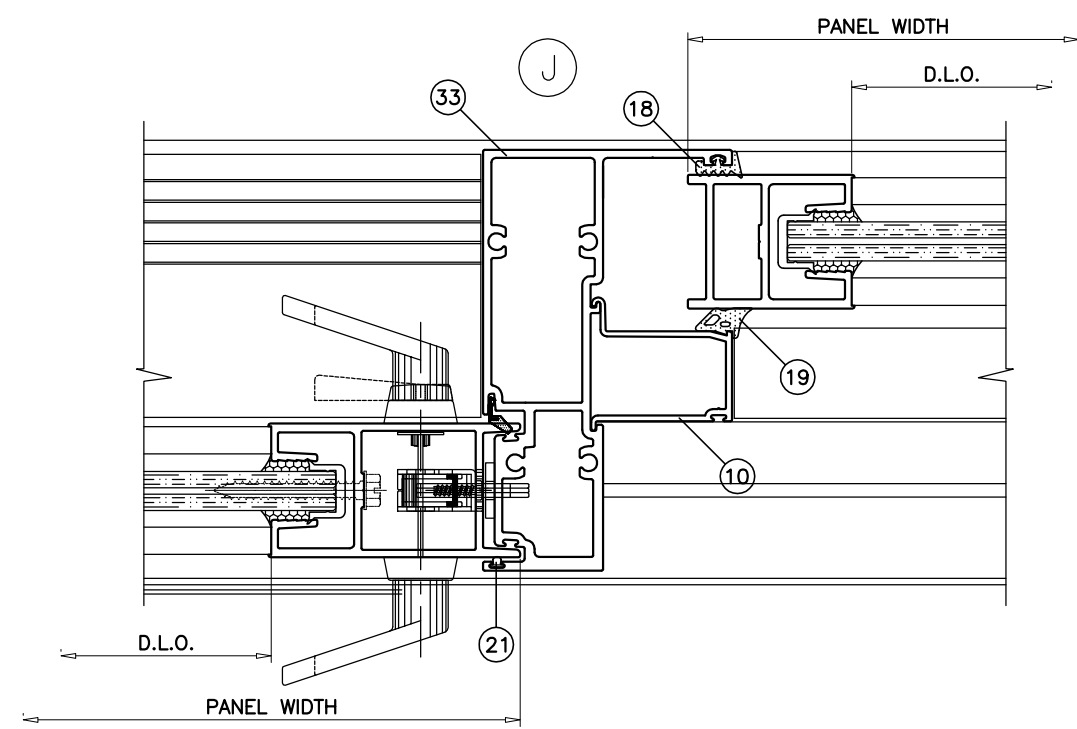
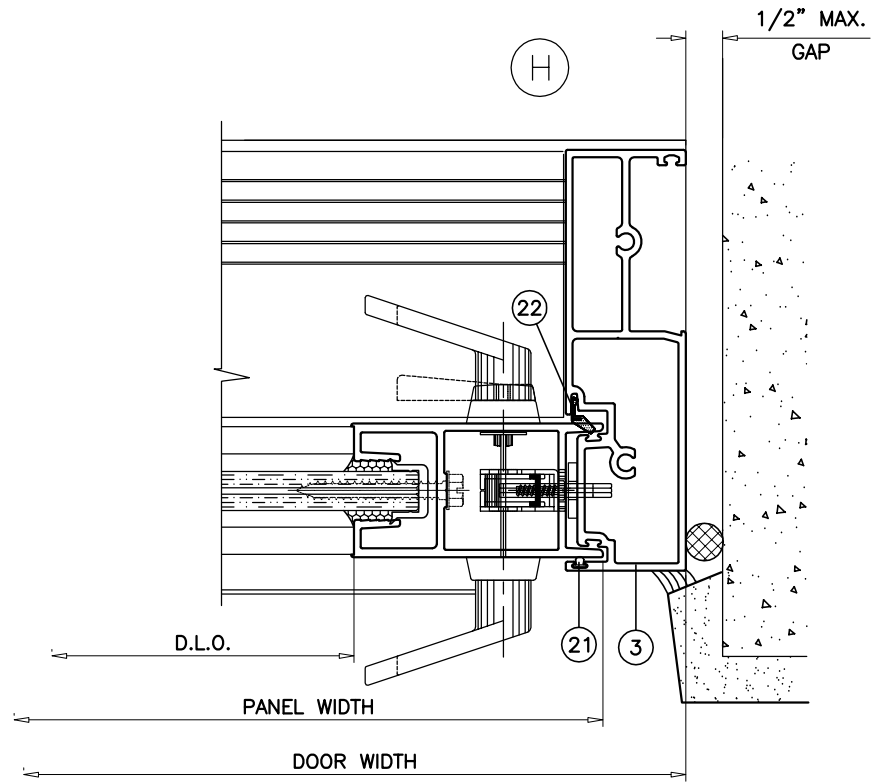
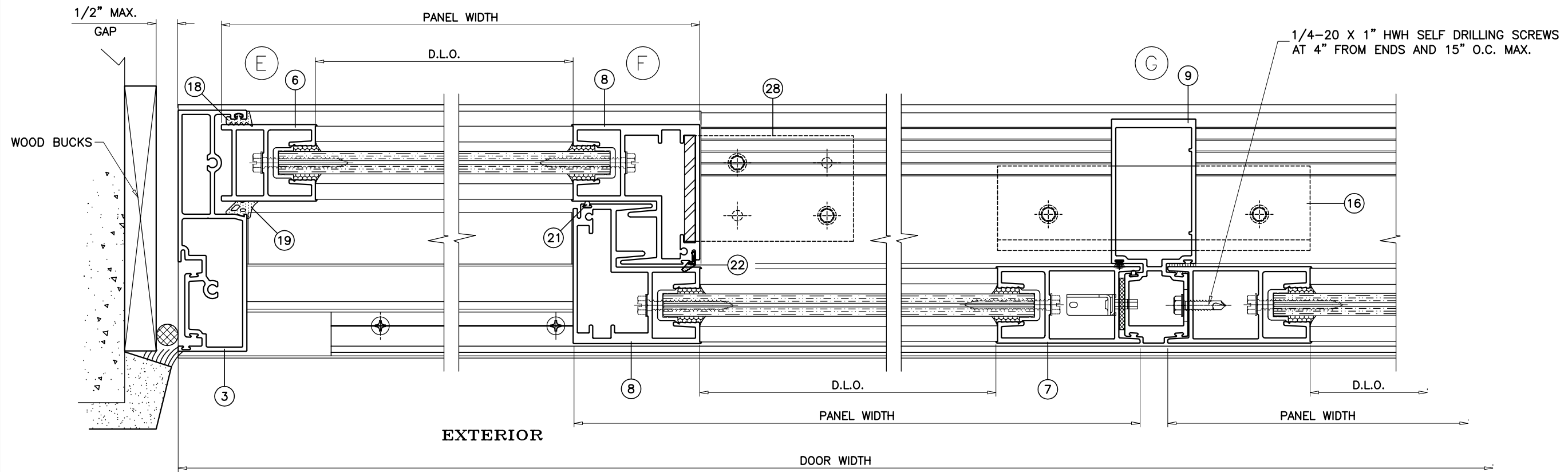
af c
 AL-FAROOQ CORPORATION
 ENGINEERS & PRODUCT DEVELOPMENT
 1235 S.W. 87 AVE
 MIAMI, FLORIDA 33174
 TEL. (305) 264-8100 FAX. (305) 262-6978
 COMP-ANL\W07-84NR

SERIES-6001 ALUM SLIDING GLASS DOOR (L.M.I.)
NR ARCHITECTURAL PRODUCTS
 4348 WESTROADS DRIVE
 WEST PALM BEACH, FL. 33407
 TEL. (561) 844-1121 FAX. (561) 844-6131

revisions:	no	date	description

date: 10-18-07
 scale: 3/8" = 1"
 dr. by: HAMID
 chk. by:

drawing no.
W07-84
 sheet 4 of 7



Engr: DR. HUMAYOUN FAROOQ
STRUCTURES
FLA. PE # 16557
C.A.N. 3538

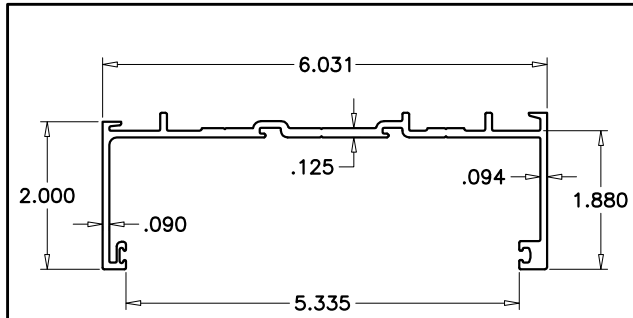
af c
AL-FAROOQ CORPORATION
ENGINEERS & PRODUCT DEVELOPMENT
1235 S.W. 87 AVE
MIAMI, FLORIDA 33174
TEL. (305) 264-8100 FAX. (305) 262-6978
COMP-ANL\W07-84NR

SERIES-6001 ALUM SLIDING GLASS DOOR (L.M.I.)
NR ARCHITECTURAL PRODUCTS
4348 WESTROADS DRIVE
WEST PALM BEACH, FL. 33407
TEL. (561) 844-1121 FAX. (561) 844-6131

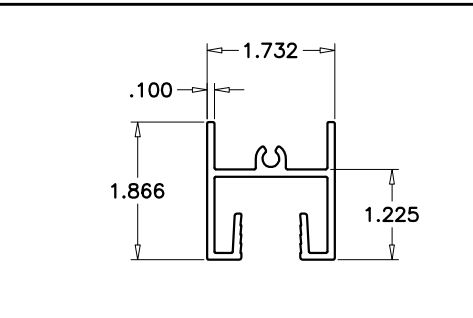
revisions:	no	date	by	description

date: 10-18-07
scale: 3/8" = 1"
dr. by: HAMID
chk. by:

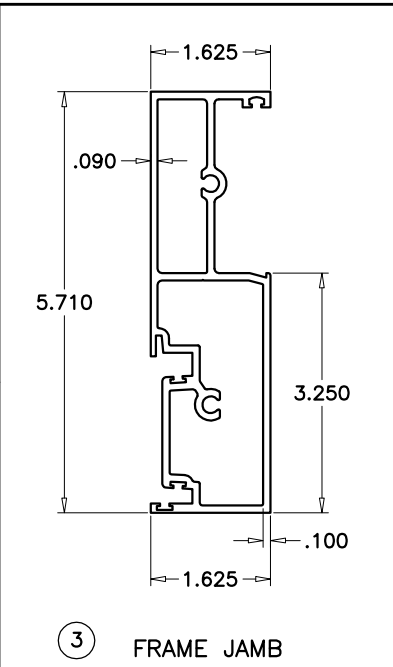
drawing no.
W07-84
sheet 5 of 7



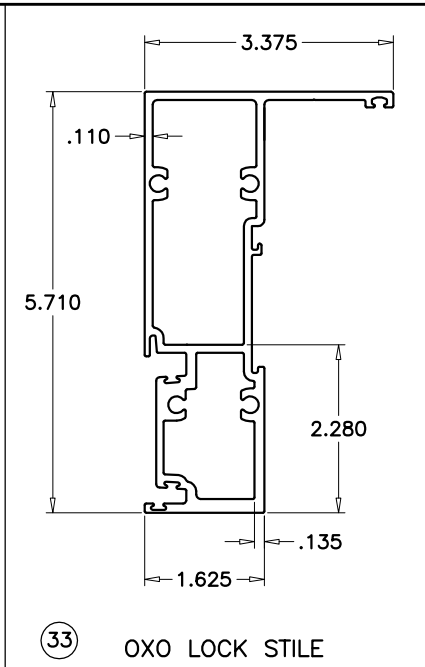
① FRAME HEAD



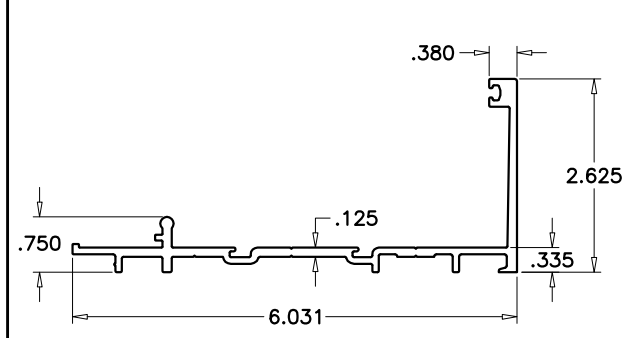
④ PANEL TOP RAIL



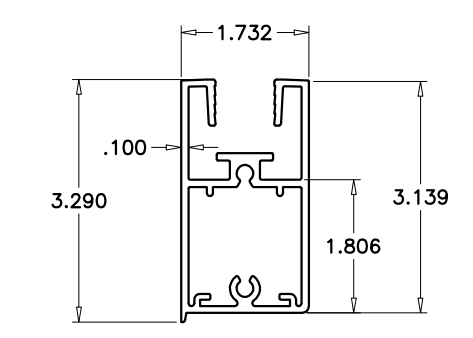
③ FRAME JAMB



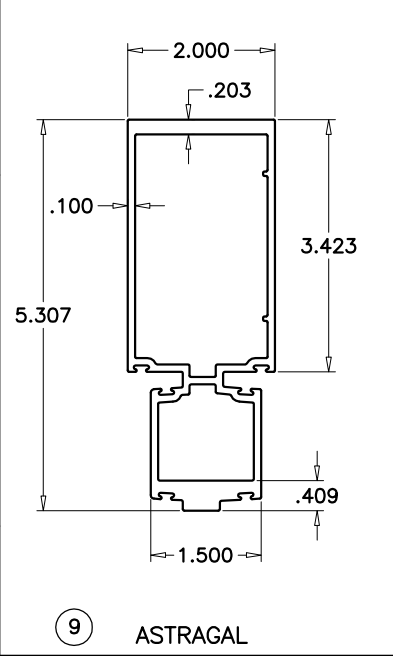
③③ OXO LOCK STILE



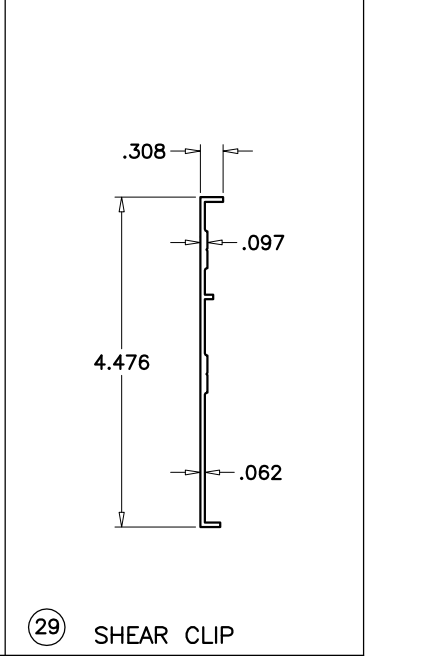
② FRAME SILL



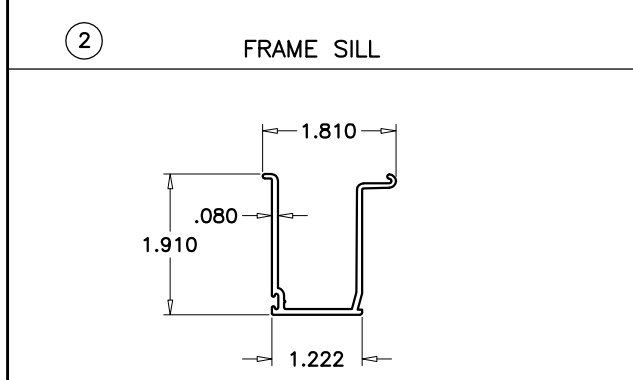
⑤ PANEL BOTTOM RAIL



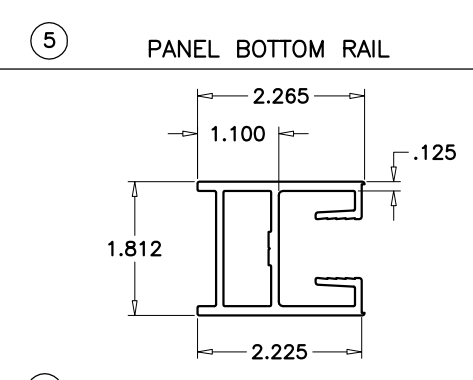
⑨ ASTRAGAL



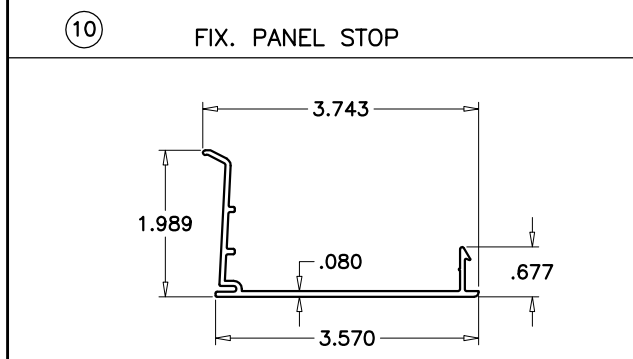
②⑨ SHEAR CLIP



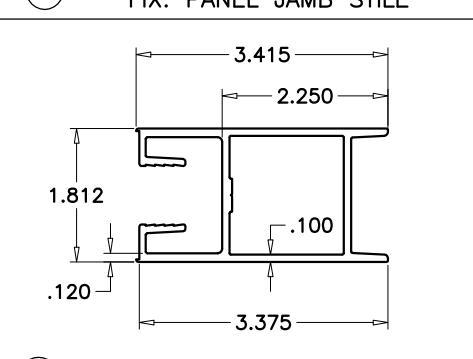
⑩ FIX. PANEL STOP



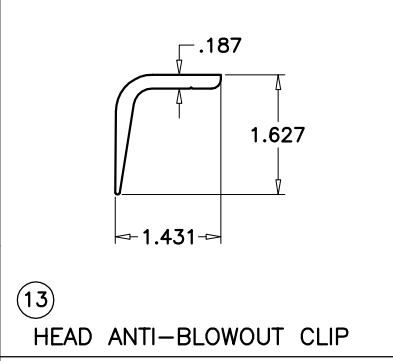
⑥ FIX. PANEL JAMB STILE



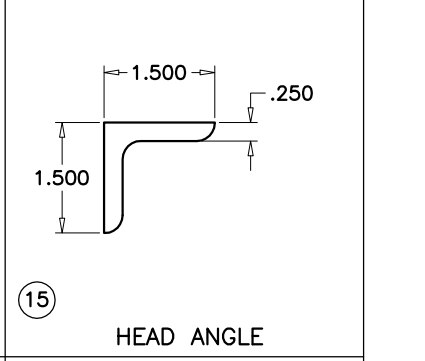
⑪ HEAD TRIM



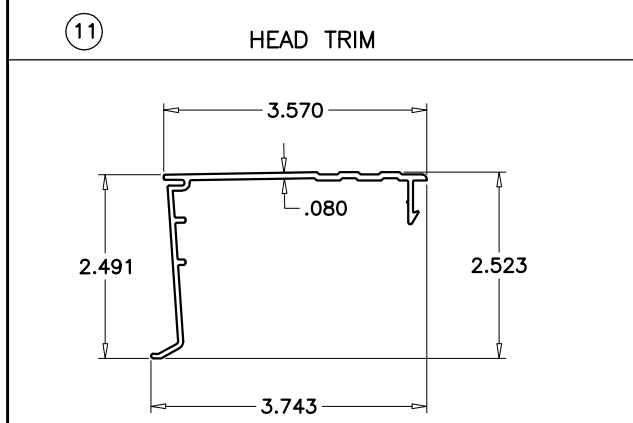
⑦ OPERATING PANEL JAMB STILE



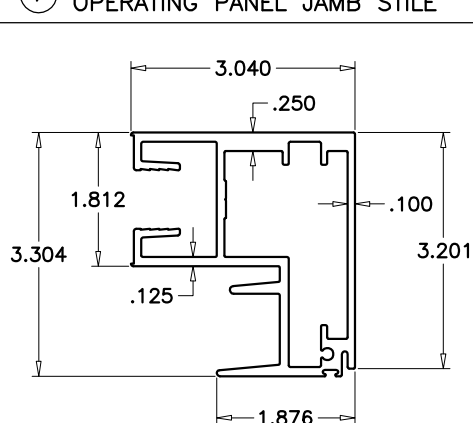
⑬ HEAD ANTI-BLOWOUT CLIP



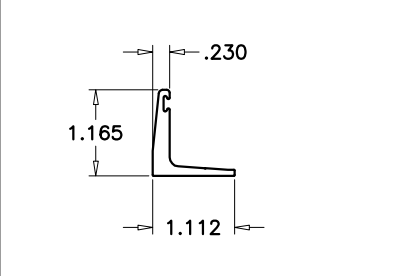
⑮ HEAD ANGLE



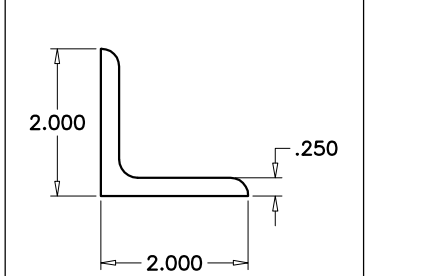
⑫ SILL THRESHOLD TRIM



⑧ INTERLOCK STILE



⑭ SILL ANTI-BLOWOUT CLIP



⑯ SILL ANGLE

Engr: DR. HUMAYOUN FAROOQ
STRUCTURES
FLA. PE # 16557
C.A.N. 3538

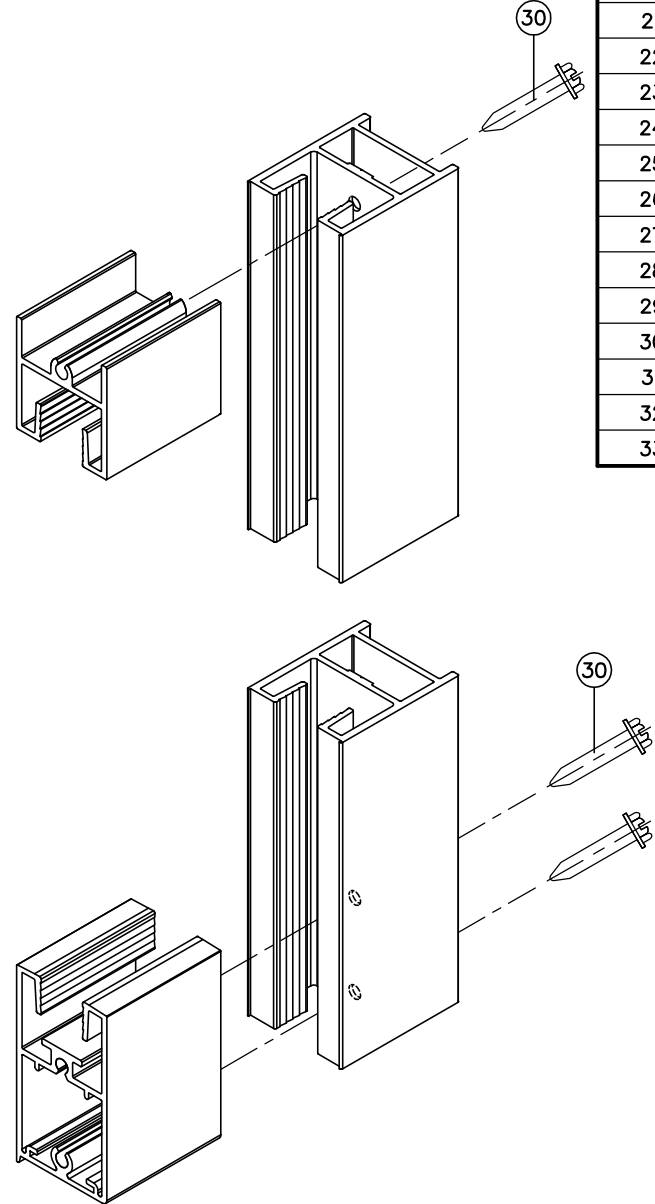
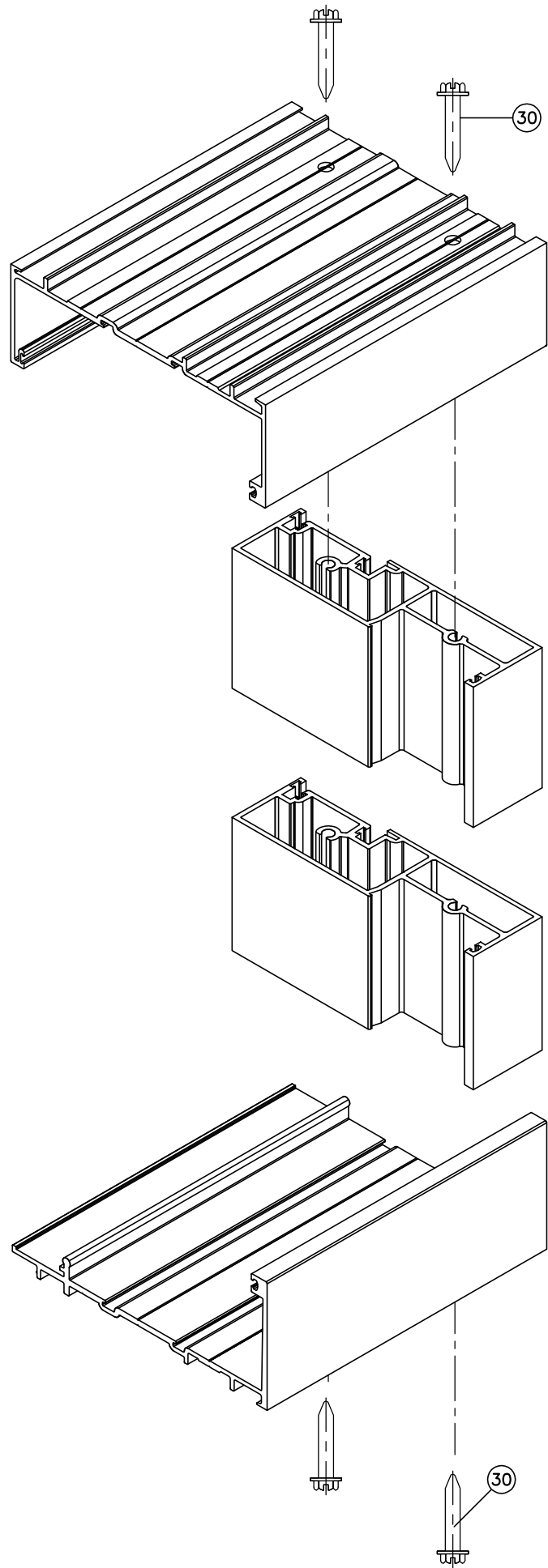
afc
AL-FAROOQ CORPORATION
ENGINEERS & PRODUCT DEVELOPMENT
1235 S.W. 87 AVE
MIAMI, FLORIDA 33174
TEL. (305) 264-8100 FAX. (305) 262-6978
COMP-ANL\W07-84NR

SERIES-6001 ALUM SLIDING GLASS DOOR (L.M.I.)
NR ARCHITECTURAL PRODUCTS
4-348 WESTROADS DRIVE
WEST PALM BEACH, FL. 33407
TEL. (561) 844-1121 FAX. (561) 844-6131

revisions:	no	date	description

date: 10-18-07
scale: 3/8" = 1"
dr. by: HAMID
chk. by:

drawing no.
W07-84
sheet 6 of 7



ITEM #	PART #	QUANTITY	DESCRIPTION	MATERIAL	MANF./SUPPLIER/REMARKS
1	SD-001	1	FRAME HEAD	6005-T5	-
2	SD-002	1	FRAME SILL	6005-T5	-
3	SD-003	1	FRAME JAMB	6005-T5	-
4	SD-006	2/ PANEL	TOP RAIL	6005-T5	-
5	SD-007	2/ PANEL	BOTTOM RAIL	6005-T5	-
6	SD-008	AS REQD.	FIX. PANEL JAMB STILE	6005-T5	-
7	SD-010	AS REQD.	OPERATING PANEL JAMB STILE	6005-T5	-
8	SD-009	AS REQD.	INTERLOCK STILE	6005-T5	-
9	SD-005	AS REQD.	ASTRAGAL STILE	6005-T5	-
10	SD-011	AS REQD.	FIX. PANEL STOP	6005-T5	-
11	SD-013	-	HEAD TRIM	6005-T5	-
12	SD-012	-	SILL THRESHOLD TRIM	6005-T5	-
13	SD-014	1	HEAD ANTI-BLOWOUT CLIP	6005-T5	AT MOV. PANELS ONLY
14	SD-015	1	SILL ANTI-BLOWOUT CLIP	6005-T5	LENGTH = FRAME WIDTH - 9"
15	NR-A1	-	HEAD REINF. ANGLE	STEEL	7-3/8" LONG
16	NR-A2	-	SILL REINF. ANGLE	STEEL	7-3/8" LONG
17	NR-A3	-	BACK UP PLATE	ALUM	1 X 4 X 1/4"
18	NR-G8	AS REQD.	PRESET GASKET	EPDM SPONGE	TR-15094E
19	NR-G9	AS REQD.	WEDGE GASKET	EPDM 70 DURO	TR-0436E
20	NR-G10	AS REQD.	FINPILE W'STRIPPING (.187W X .260H)	-	-
21	NR-G11	AS REQD.	BULB GASKET	VINYL	Q200T190 Q-LON
22	NR-G12	AS REQD.	FINGER GASKET	-	QEZD 250 Q-LON
23	NR-G14	AS REQD.	GLAZING GASKET (TRIMMED)	70 DURO	TR-15971W
24	NR-G15	AS REQD.	FIX. PANEL SETTING BLOCK	EPDM 80 DURO	4" LONG
25	NR-G16	AS REQD.	DOOR STOP	-	-
26	NR-A4	-	TRACK COVER	ST/ST	-
27	NR-A5	2/ MOV. PANEL	DUAL TANDEM ROLLER ASSEMBLY	ST/ST	DELTA
28	NR-A6	-	FIX. PANEL ANGLE BRACKET	-	3 X 4 X 1/4" X 2-1/2" LONG
29	NR-A7	AS REQD.	SHEAR CLIP CONTINUOUS	6005-T5	-
30	NR-F4	AS REQD.	FRAME/PANEL ASSEMBLY SCREWS	-	1/4-20 X 1-1/2" HWH TC
31	NR-F5	-	HEAD ANTI-BLOWOUT CLIP FASTENERS	-	1/4-20 X 3/4" HWH MS
32	NR-F6	-	SILL ANTI-BLOWOUT CLIP FASTENERS	-	#12 X 1/4" X 1/2" PHP SMS
33	SD-004	AS REQD.	OXO PANEL LOCK STILE	6005-T5	-

Engr: DR. HUMAYOUN FAROOQ
 STRUCTURES
 FLA. PE # 16557
 C.A.N. 3538

af c
 AL-FAROOQ CORPORATION
 ENGINEERS & PRODUCT DEVELOPMENT
 1235 S.W. 87 AVE
 MIAMI, FLORIDA 33174
 TEL. (305) 264-8100 FAX. (305) 262-6978
 COMP-ANL\W07-84NR

SERIES-6001 ALUM SLIDING GLASS DOOR (L.M.I.)
NR ARCHITECTURAL PRODUCTS
 4348 WESTROADS DRIVE
 WEST PALM BEACH, FL. 33407
 TEL. (561) 844-1121 FAX. (561) 844-6131

revisions:	no	date	by	description

date: 10-18-07
 scale: 3/8" = 1"
 dr. by: HAMID
 chk. by:

drawing no.
W07-84
 sheet 7 of 7